

LED Ground Bunied Light

Model : GB-0618-H108G

Features:

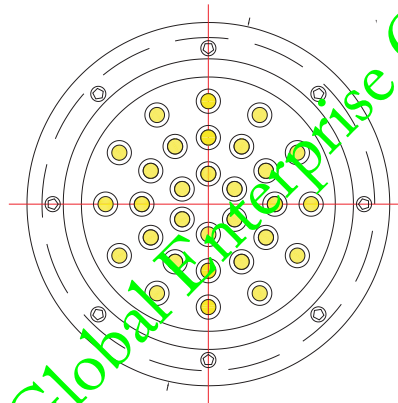
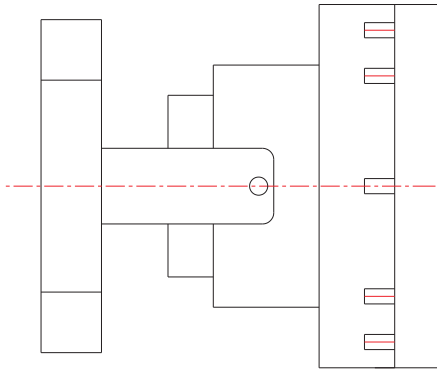
1. Lamp body is made of good-quality aluminum alloy, stainless steel and die-casting aluminum with exquisite and unique design
2. Lamp is sealed by toughed glass, rubber ring, silica gel to make sure waterproof
3. IP Grade: Ip67
4. Using imported low consumption & high efficiency LEDs has high CRI and luminous flux.
5. Control: Continuous lighting single color effect (red ,green,blue, yellow,white,warm white); Internal RGB.
6. Application: park,palaze,office,garden tree,road and other outdoor



Lighting Source



Model:GB-0618-H108G



Standard

Standard Size(mm)	Ø220mm
Hole Size	200mm
Voltage (V)	AC85~265V
Beam Angle	90 degree
CRI	>80Ra
Luminous Efficacy	100 lm/w
Power Factor	> 0.92
Power (W)	18W
Cover Material	Stainless+Explosion-proof glass
Color Temperature	2700K-6500K
Life Time	50,000(H)
IP Grade	IP 65

LED Ground Bunied Light



Lighting Source

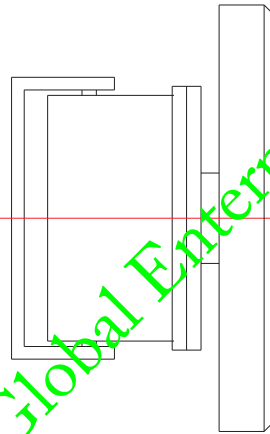
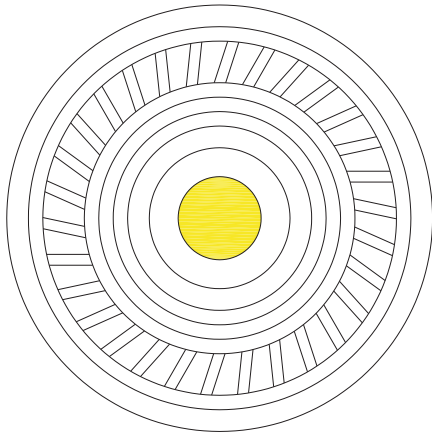
Model : GB-0620-H108E

Features:

1. Lamp body is made of good-quality aluminum alloy, stainless steel and die-casting aluminum with exquisite and unique design
2. Lamp is sealed by toughed glass, rubber ring, silica gel to make sure waterproof
3. IP Grade: Ip67
4. Using imported low consumption & high efficiency LEDs has high CRI and luminous flux.
5. Control: Continuous lighting single color effect (red ,green,blue, yellow,white,warm white); Internal RGB.
6. Application: park,palaze,office,garden tree,road and other outdoor



Model:GB-0620-H108E



Standard

Standard Size(mm)	Ø220mm
Hole Size	180mm
Voltage (V)	AC85~265V
Beam Angle	90 degree
CRI	>80Ra
Luminous Efficacy	100 lm/w
Power Factor	> 0.92
Power (W)	20W
Cover Material	Stainless+Explosion-proof glass
Color Temperature	2700K-6500K
Life Time	50,000(H)
IP Grade	IP 65

LED Ground Bunied Light



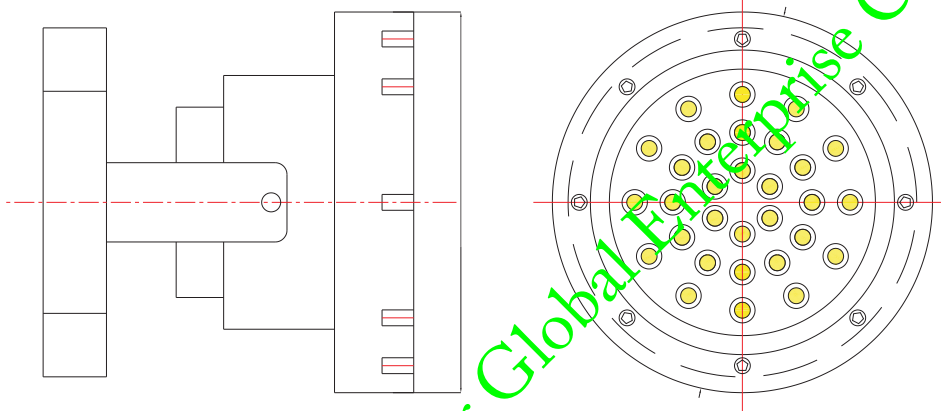
Model : GB-0812-H108E

Features:

1. Lamp body is made of good-quality aluminum alloy, stainless steel and die-casting aluminum with exquisite and unique design
2. Lamp is sealed by toughed glass, rubber ring, silica gel to make sure waterproof
3. IP Grade: Ip67
4. Using imported low consumption & high efficiency LEDs has high CRI and luminous flux.
5. Control: Continuous lighting single color effect (red ,green,blue, yellow,white,warm white); Internal RGB.
6. Application: park,palaze,office,garden tree,road and other outdoor



Model:GB-0812-H108E



Standard

Standard Size(mm)	Ø210*95mm
Hole Size	200mm
Voltage (V)	AC85~265V
Beam Angle	30 degree
CRI	>80Ra
Luminous Efficacy	100 lm/w
Power Factor	> 0.92
Power (W)	12W
Cover Material	Stainless+Explosion-proof glass
Color Temperature	2700K-6500K
Life Time	50,000(H)
IP Grade	IP 65